



Labre Society 2014 Annual Report



**The Mission of the Labre Society is to provide basic items of necessity to
the homeless of Tarrant County**

BOARD MEMBERS 2014

President Anna Gaines

Vice President Shawn Myers

Secretary Joan Wells

Treasurer Roger Gilley

At Large Board Members

Terms Ending 1/31/2015

Amanda Belomy

Becky Flores-Keasler

Delinda Driver

Patrick McKeon

Terms Ending 1/31/2016

Matt Hamlin

Doug Condie

The Labre Society
P.O. Box 470153
Fort Worth, Texas 76147

board@labresociety.org
www.labresociety.org



Message from the President

2014 marked the fifth anniversary of the Labre Society receiving its non-profit status from the IRS and establishment of its first board of directors. We have come a long way since those early days of only six board members who were responsible for every aspect of providing Gift Bags for the Homeless.

Twelve members now comprise the Labre Society board of directors, and they are still carrying the bulk of the load in providing the service we do. They are a dedicated and passionate group which has maintained the vision and focus needed to continue our works. The spirit of volunteerism shines in everything they do, along with the drive to move the organization forward to its future.

I am proud to have led this stellar group for the last two years, and look forward to the leadership of the new president, Shawn Myers. His compassion, combined with business pragmatism, is sure to bring the Labre Society to new levels of service.

All our volunteers are priceless, and I would be remiss if I did not thank them. We cannot thank you enough for sticking with us, letting us work you to the bone and bringing new people to join in giving of ourselves to serve those in need. A shout out to families who bring children; you give a solid base to the future of charity and good works.

We would especially like to thank the family of long-time volunteer Jimmy Bryant, who passed away suddenly in 2014. Jimmy was a hard worker who never missed a volunteer event once we had him hooked. His extended family made the Labre Society their organization of choice to serve others and swelled our ranks with new volunteers. The 2014 Summer Relief Bags were dedicated to Jimmy, and we are so honored to have done so.

Please remember to talk about us to everyone you know throughout the year. We cannot afford to lose the momentum of providing for those who need us most.

Anna Gaines

Board President

HISTORY OF THE LABRE SOCIETY

The Labre Society began in 1999 as an individual act of kindness. The very first delivery of gifts consisted of one person distributing 20 gift bags filled with heavy duty socks and gloves to workers seeking day labor on East Lancaster in Fort Worth. Since that time, the organization has grown to include approximately 35 volunteers and several local businesses, all working together to provide gift bags filled with basic items of necessity to the homeless of Tarrant County.

In January 2009 a board of directors was formed, and the organization received recognition from the IRS as a 501 (c) (3) Public Charity in May of that year. The Labre Society is a charity whose mission is to provide basic items of necessity to the homeless of Tarrant County. The organization takes its name from Benedict Joseph Labre, the patron saint of homeless.

The Labre Society Board of Directors increased its giving in 2011 by distributing 480 Summer Relief Bags filled with items specifically designed to give respite from the sweltering Texas summer. The board voted in September 2011 to increase the Christmas Gift Bags to 700 adult bags, as well as 40 backpacks for children temporarily housed at the Presbyterian Night Shelter's Lowdon-Schutts Building for women and children.

The Board of Directors operates the Labre Society with very little overhead, and any indirect or administrative costs are covered by annual board dues. Because of a committed Board of Directors and an all-volunteer workforce, the Labre Society is proud to report that 100% of donations go directly to the cost of the service provided. In addition, core donors have demonstrated continuing support through in-kind donations of food items, bus passes, storage, sponsorship of items for the bags, and venues to pack the bags for distribution.



Many homeless are women with children who find it hard to find work and child care. The many agencies that help with training and child care are making a difference in Fort Worth. Many have found homes within the past two years.

2014 Highlights

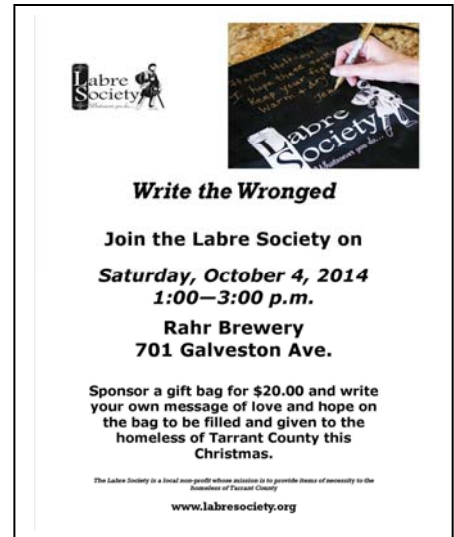
The Labre Society met in January 2014 to review the 2013 Bag projects. At that meeting two new board members were introduced after being approved by the board. These new at-large member replace Amy Myers and Selarstein Mitchell who resigned due to extended work obligations. Matt Hamlin and Danielle Schneider are the new board members.

- The Summer Relief Bag project was held June 8, 2014. 480 back packs were distributed to the homeless of Fort Worth. Each sport bag contained 2 bus passes from the T (500 were donated by the T), a baseball cap, two pair of socks, sunscreen, insect repellent, bandana, lip balm, hand sanitizer, shampoo/body wash, razor, toothbrush, toothpaste, and deodorant. Roger Gilley donated bottled water for each bag.
- The society's web site, www.labresociety.org, has continued to help the society get its message and information out to the public. Katie Cole continues to assist in getting the latest information posted on the Web.
- The partnership with the Community Food Bank to store items for bags and as our packing facility has continued to benefit the organization. The summer relief bags and Holiday bags were packed there with great success! Our office at the Community Food Bank is a great help – we have internet and storage room as well as the use of their meeting room for our board meetings.
- Since The T has limited the number of free bus passes it donates to local non profits who give them to the homeless and needy to get to work or hospitals, the Labre Society had to purchase the bus passes needed for \$1.75.
- The Labre Society applied to the Junior League of Fort Worth for a grant to help us provide the items needed for Relief Bags. They granted \$1,000.00.
- The Labre Society participated in the 2014 Texas Giving Day, held September 18, 2014. This project encourages people from around North Texas to select their favorite charities and donate through the Donor Bridge web site. All monies donated above \$25.00 will receive matching money from the Community Foundation of Texas. The society was successful in raising more than \$4,000.



Craig, Connor and Beckie wore placards and visited with many other participants during the kickoff at Sundance Square. This was Fort Worth's first kickoff.

- Due to the increases costs of items for the bags and the need to purchase bus passes, the Labre Society applied to LM AERO Club for a grant. The Employee managed group donated \$5,000 to help us with socks and bus passes.
- A fund raiser was held at Rahr Brewery on October 5, 2014, to help raise funds for winter bags. Signature bags and donations from this event raised over \$600.00.
- On Monday, December 22, 2014, the Labre Society distributed 700 back packs to homeless of Tarrant County. Forty children of homeless persons received back packs filled with personal necessities and toys \thanks to a generous donation of a \$1000 to Walmart from Shawn and Amy Myers.



Summer Bag Items 2014

480 Sports Bags (backpacks with Labre Society Logo)
 500 Bus Passes Donated by the T
 460 Bus Passes purchased through Fare Aid
 480 Baseball Caps
 960 pair of socks
 480 tubes of sunscreen
 480 Insect repellent pins
 480 Bandanas
 480 Large Zip Lock Bags
 500 Lip Balms
 400 Hand Sanitizer bottles
 480 Bottles shampoo/cream rinse/body wash
 480 Razors
 480 Tubes of toothpaste
 480 Toothbrushes
 480 Deodorants
 960 bottles of water

Winter Bag Items 2014

700 Sports Bags with Labre Logo
 1400 Bus Passes purchased through The T
 700 Hand Towels
 1400 pair of socks
 700 Gloves
 700 Scarves
 700 Wool Caps
 Band Aids
 700 Shampoo/Body Wash
 700 Toothbrushes
 700 Tubes of Toothpaste
 700 Deodorant
 700 Combs
 700 Lotion
 700 Lip Balm
 700 Razors
 700 Large zip lock bags
 1400 Bottles of Water-
 3 Snacks and Breakfast Bars per bag



Financial Statement - 2014

**2014 Yearly Income Statement
Labre Society**

Income:

Board Dues.....	\$ 900.
General Donations.....	\$ 5,903.
Fundraiser Donations.....	\$ 608.
Winter Bag Donations.....	\$ 13,137.
In Kind Donations.....	\$ 2,871.

Total Income..... \$23,419.

Expenditures:

Volunteer Development.....	\$ 184.
Operating Costs.....	\$ 3,158.
Summer Bag Expenses.....	\$ 5,567.
Winter Bag Expenses.....	\$ 10,159.
Charitable Donation.....	\$ 100.
Inventory.....	\$ 659.

Total Expenditures..... \$19,827.

Total Income Less Expenses..... \$ 3,592.

Breakdown of Operating Costs

Rent, CFB.....	\$2,400.
Post Office Box.....	\$ 128.
Tax Preparation.....	\$ 275.
Bank Charges.....	\$ 25.
Membership CNM.....	\$ 230.
Website Maintenance.....	\$ 100.

Donations Received:

Grants from the *Junior League of Fort Worth* (\$1,000.00) and *LOCKHEED MARTINAERONAUTICS EMPLOYEES' REACHING OUT (AERO) CLUB* (\$5000.00) are included in the General Donations amount.

Volunteers 2014

In addition to the members of the board of directors, the following people donated their time to our fund raiser and packing projects.

Katie Cole
Andrew Corso
Alvin Dawson Jr.
Kaye Flores
Craig Foye
Kaycee Hamlin
Rachel Ingram
Joe Keasler
Chris Key
Shannon Kimble
Sarah Long
Alicia Luster
Selarstein and Lee Mitchell
Chris Mosley
Daryl Phillips
David Phillips
Gary Shank
Brenda Steward
Chaun Vickery and children



Donors 2014

Jeff and Janice Benton
Turner Bettis
David Brawner
Paul Bryan
Richard and Pat Carr
Betty Chew
Susan Cockrell
Michelle Coffey
Katie Cole
Cooper Collins (Whitfield Collins
Charitable Fund)
Doug Condie
Delinda Driver
Malcom Fleet
Anna Gaines
Roger and Jennifer Gilley
Bill and Cassie Green

Diana Hanson
Joe and Beckie Keasler
Selarstein Mitchell
Shawn and Amy Myers
Leslie Oliver
Louis Ott
Nealana Patton
Jim Roach
Judy Sagar
Gary Steinberg
Karen Valenzuela
Richard Varnell – Dick and Emilie
Varnell Family Foundation
Lloyd Walsh
Joan A. Wells
Elana Wittenburg

Business Donors

Ben E. Keith Food Division
Community Food Bank
Energy Frontiers Partners, LP
Rahr and Sons Brewery

Smiley's Photos
The T
Weyerhaeuser Giving Fund
Oliver Dyer Appliance

Grants

Lockheed Martin Aero Club, \$5,000.00
The Junior League of Fort Worth, Texas Inc., \$1,000.00

Without the help and support of all of our donors and volunteers, the Labre Society would not be able to help so many who need so much.





The Labre Society
P.O. Box 470153 • Fort Worth, TX 76147
Email: board@labresociety.org
Visit us on facebook @ Labre Society or www.labresociety.org